



LumaFilm[®]

The New Generation of LED Lighting Technology for Signage

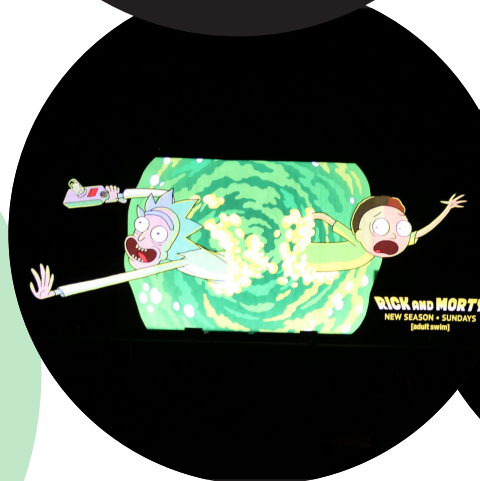
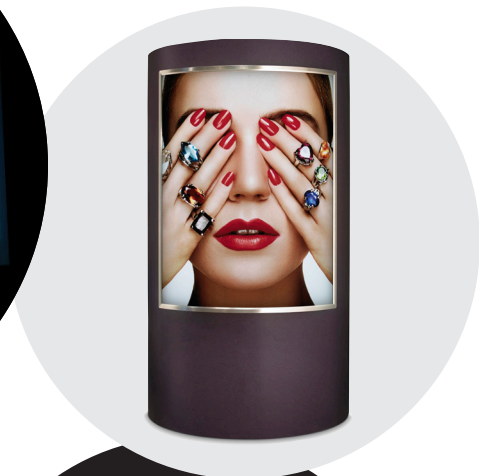
Our unique LumaFilm is unlike traditional light emitters – its super thin and flexible form factor allows for installation closer to a diffuser while expanding your choices beyond edge lighting. Curved signage designs can now become a reality without any size limitations. The light emitters (sheets) produce nominal heat and thus require NO heat sinks. LumaFilm is UL recognized and can be used in both dry and damp indoor and outdoor applications.

LumaFilm is now providing innovative solutions and differentiating products to sign and display manufacturers. Our disruptive technology produces an even light using low energy LEDs and can be customized to meet your specific requirements - - size, shape, kelvin temperature, CRI, pixilation, etc.

LumaFilm offers sign engineers and designers the option to reduce the depth of their fixtures where space is at a premium and use different, more preferable materials since a heat sink is no longer required. Manufacturing and shipping costs are reduced. Plus, installations are faster due to the ease of application that comes with thinner and lighter weight LumaFilm sheets.

Designing your signs around LumaFilm will distinguish your products, grow your market share and expand your margins.

Heilux is led by an experienced team with over 100 years of collective expertise in the development of innovative solutions to meet the ever-changing demands of today's lighting market. Whether you seek to improve your existing signs or create an all-new sign that is thinner, lighter weight and produces a higher quality of output, LumaFilm can meet your every need.



10200 Valley View Road
Suite 100
Eden Prairie, MN 55344

952-944-9859

heilux.com
quotes@heilux.com



[®]
LumaFilm

Features and Benefits

- **Thin** – Can be used in even the most constrained spaces allowing for illumination in places not previously possible.
- **Flexible** – Allows LumaFilm to be applied to a curved surface creating innovative designs and unique signage solutions.
- **Energy Efficient and Green** – High performance (typically 130 lm/W) saves energy and reduces carbon emissions resulting in a shorter payback period.
- **Indoor and Outdoor** – LumaFilm is rated for dry and damp locations both indoors and outdoors; IP65 rated.
- **UL/cUL Recognized and LM79 tested** – LumaFilm is ready to be installed with your most demanding customer.
- **No Heat Sink Required** – Unique circuit designs result in minimal heat generation allowing it to be mounted directly on almost any surface with minimal depth to the sign.
- **Fully Customizable** – Custom LumaFilm sheets can be developed quickly to meet almost any requirement; you can now allow your designs to be limited only by your imagination.
- **Tile to Virtually Any Size** – Standard LumaFilm sheets can be cut in both directions and tiled together to almost any size allowing for reduced inventory carry and more efficient use of materials.
- **Minimal Depth without Pixilation** – Many smaller LEDs allow LumaFilm to be mounted close to the diffuser without hot/dark spots.
- **Durable** – Proven to withstand harsh installation and usage for long life and dependable service.
- **Power Source Options** – LumaFilm can be powered by off-the-shelf dimming, non-dimming and programmable constant current drivers.

